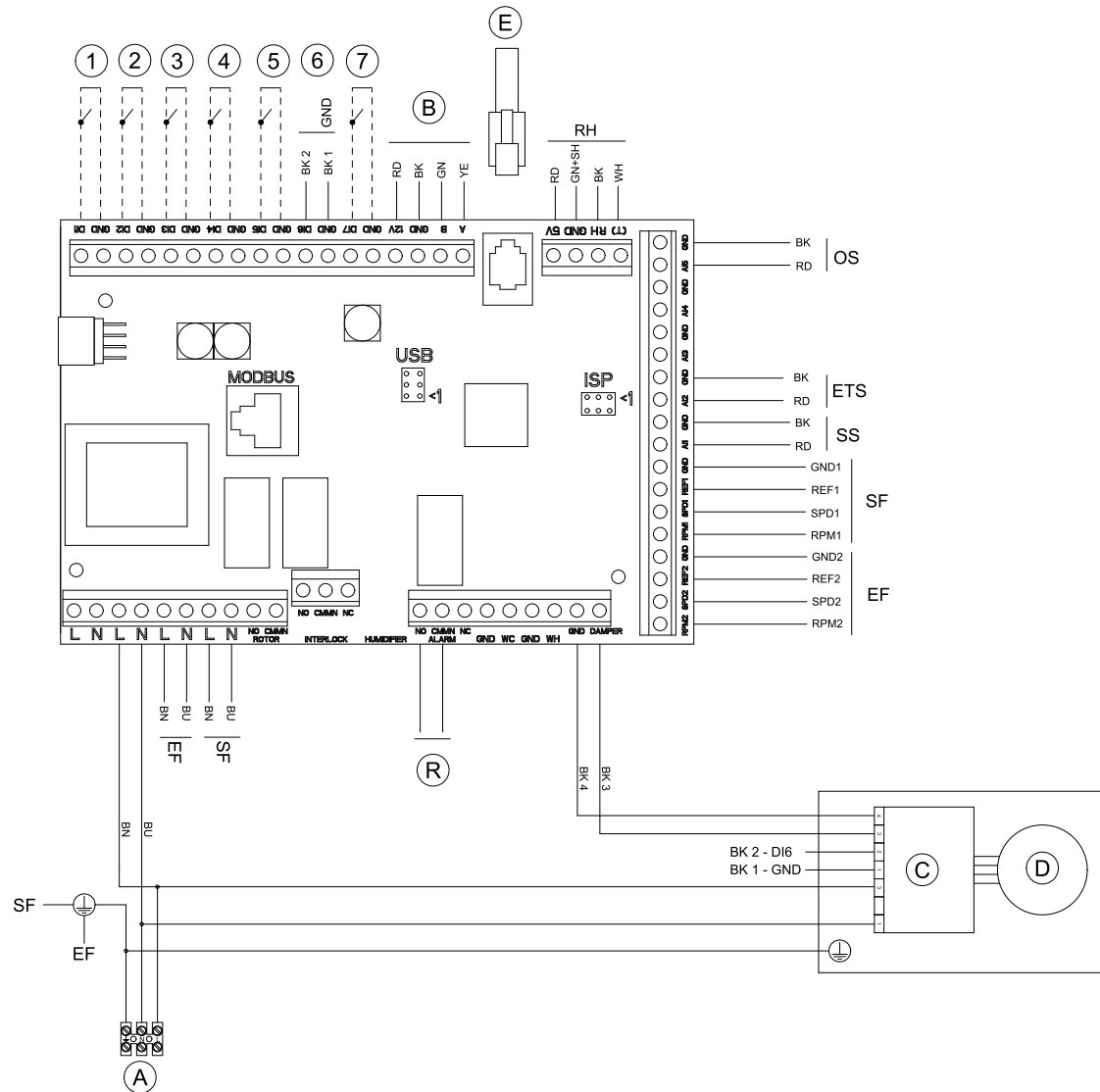
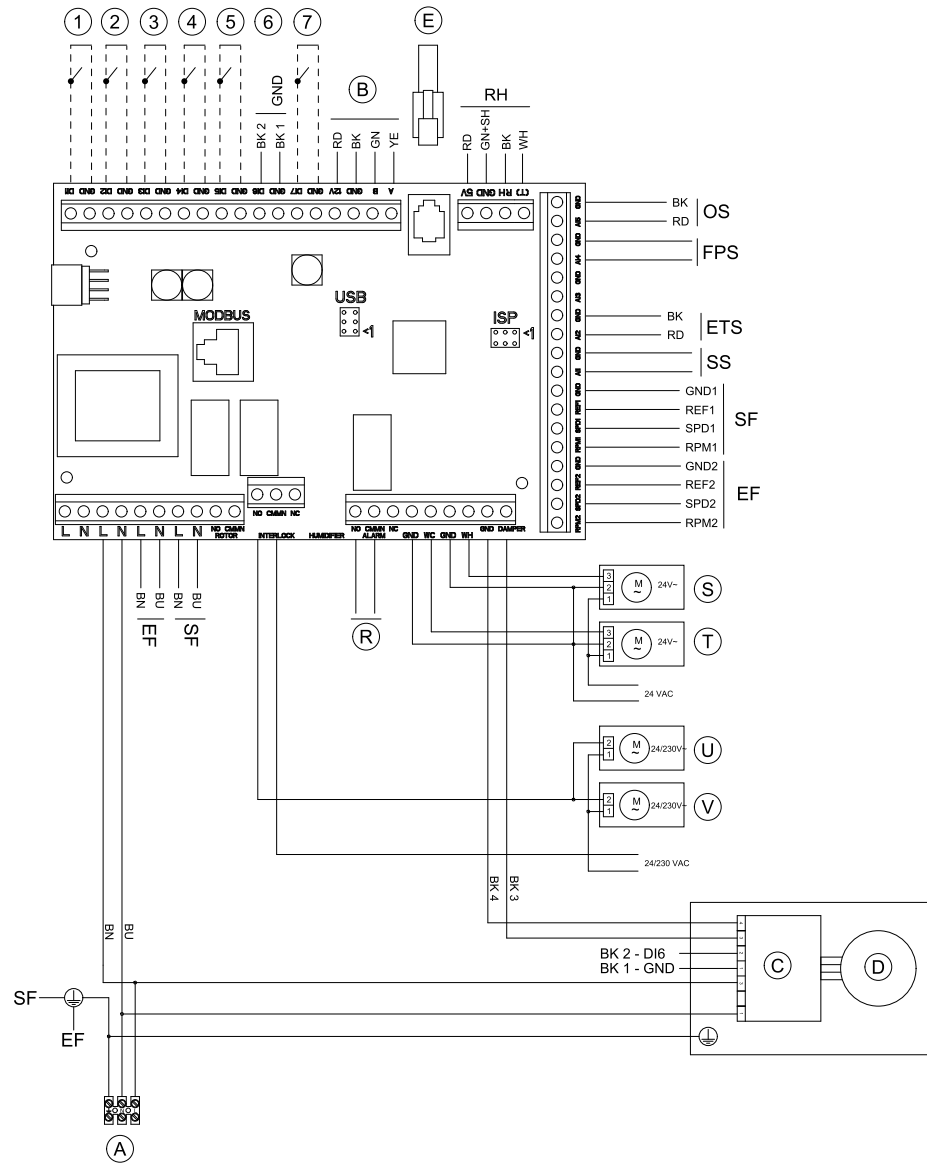


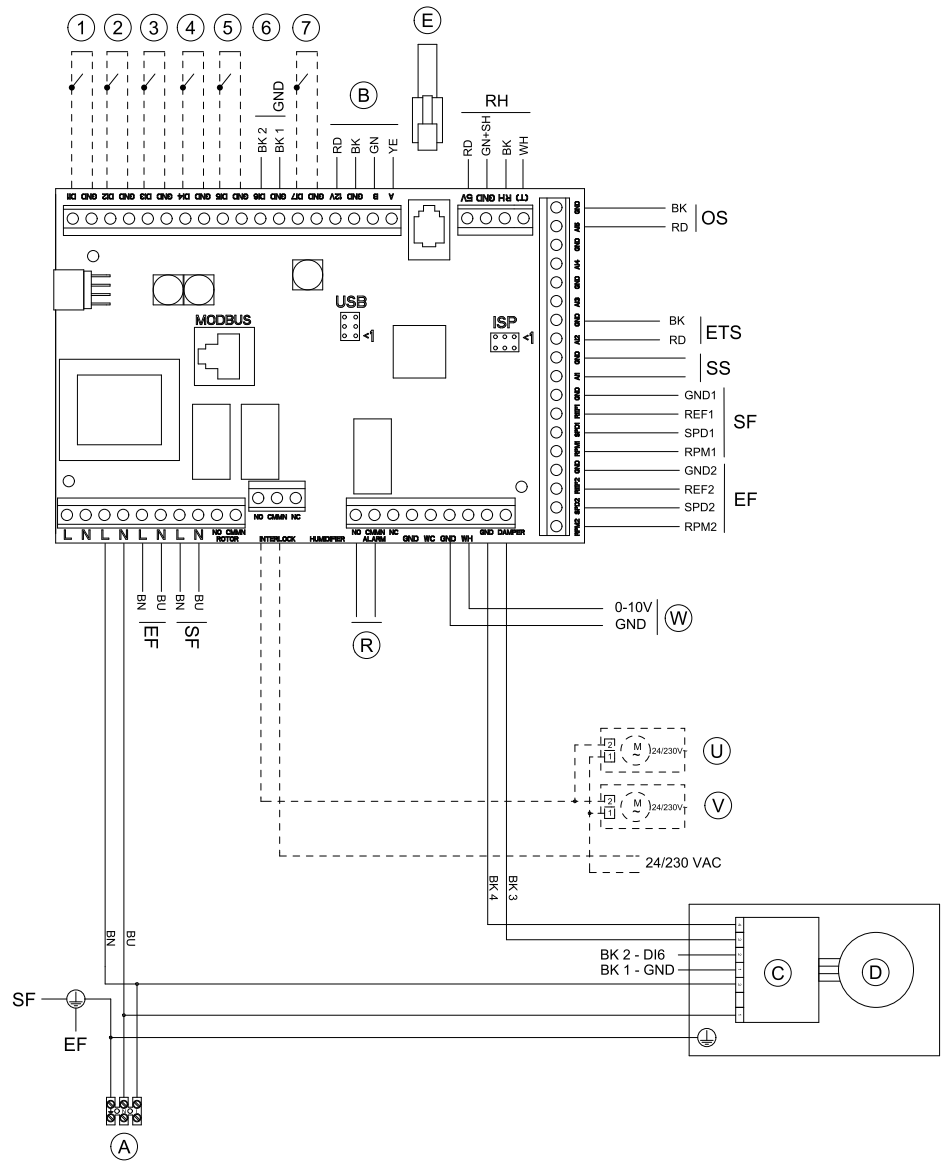
Standard configuration



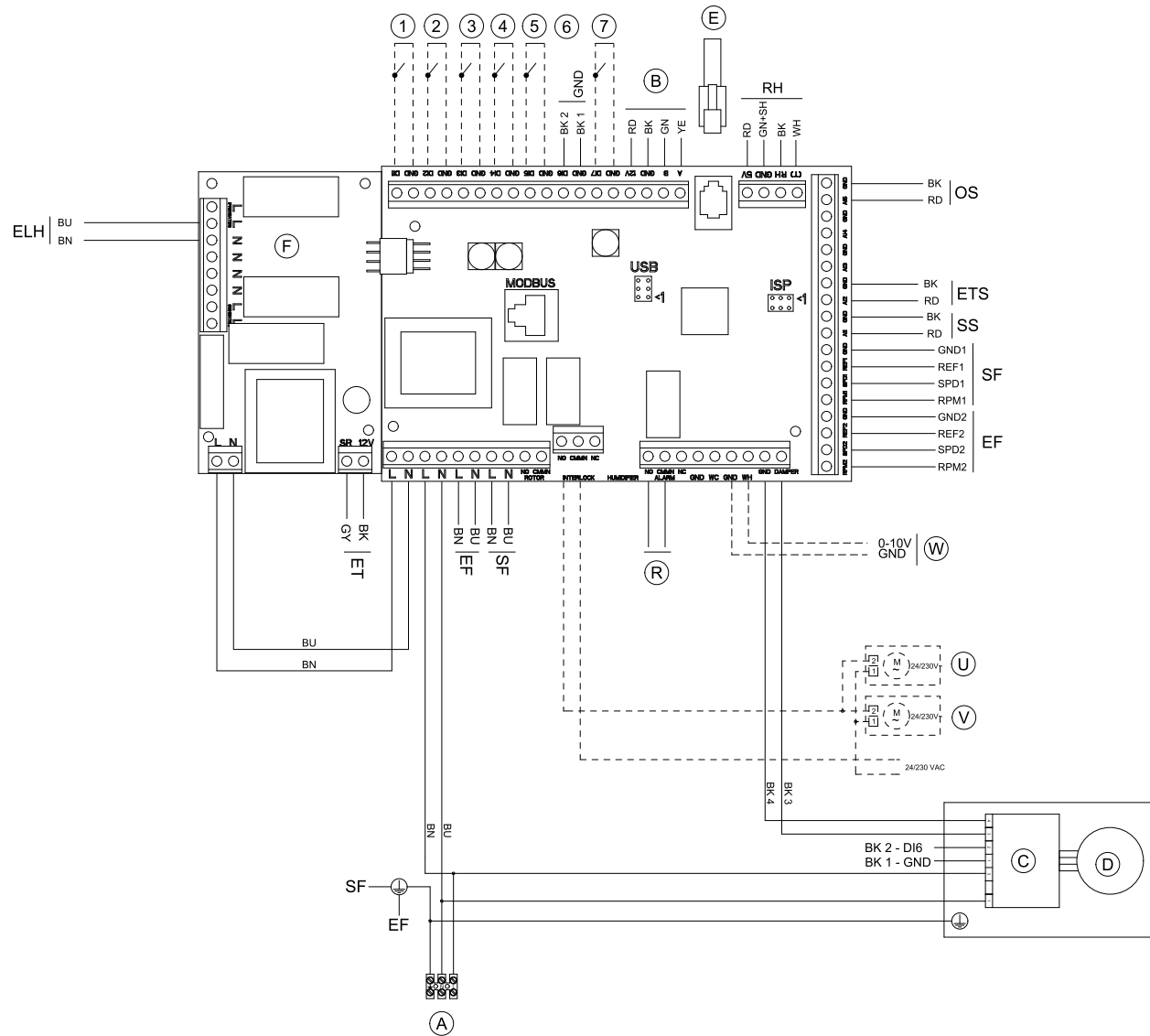
Units with HW re-heater + WC



Units with EL re-heater



Units with EL pre-heater



Symbol	Description
SF	Supply air fan.
EF	Extract air fan.
SS	Supply air temperature sensor. ¹
ETS	Extract air temperature sensor.
ELH	Electrical pre-heater battery.
OS	Outdoor air sensor.
FPS	Frost protection sensor, type TG-A130. ²
ET	Emergency thermostat, if connected to external electrical duct heater.
RH	Humidity sensor.
A	Mains supply 230 V~.
B	Internal control panel.
C	Motor control (bypass damper).
D	Damper motor 12V DC (bypass damper).
E	External control panel.
F	Circuit board, PCU – PB.
R	Sum alarm, Max 24V, 1A.
S	Water valve actuator, heating.
T	Water valve actuator, cooling.
U	Damper motor Outside air.
V	Damper motor Exhaust air.
W	Re-heater EL/HW 0-10V
1	Fan configuration: (std.: EF = High, SF = High).
2	Fan configuration: (std.: EF = Low, SF = Low).
3	Fan configuration: (std.: EF = Low, SF = High).
4	Disconnected re-heater battery.
5	Extended running.
6	Damper signal.
7	Home/leave.

BU	Blue.
BN	Brown.
BK	Black.
RD	Red.
YE	Yellow.
GY	Gray.
WH	White.
GN	Green.

1. For water heating/cooling battery, type TG-K360.
2. Water heating battery.