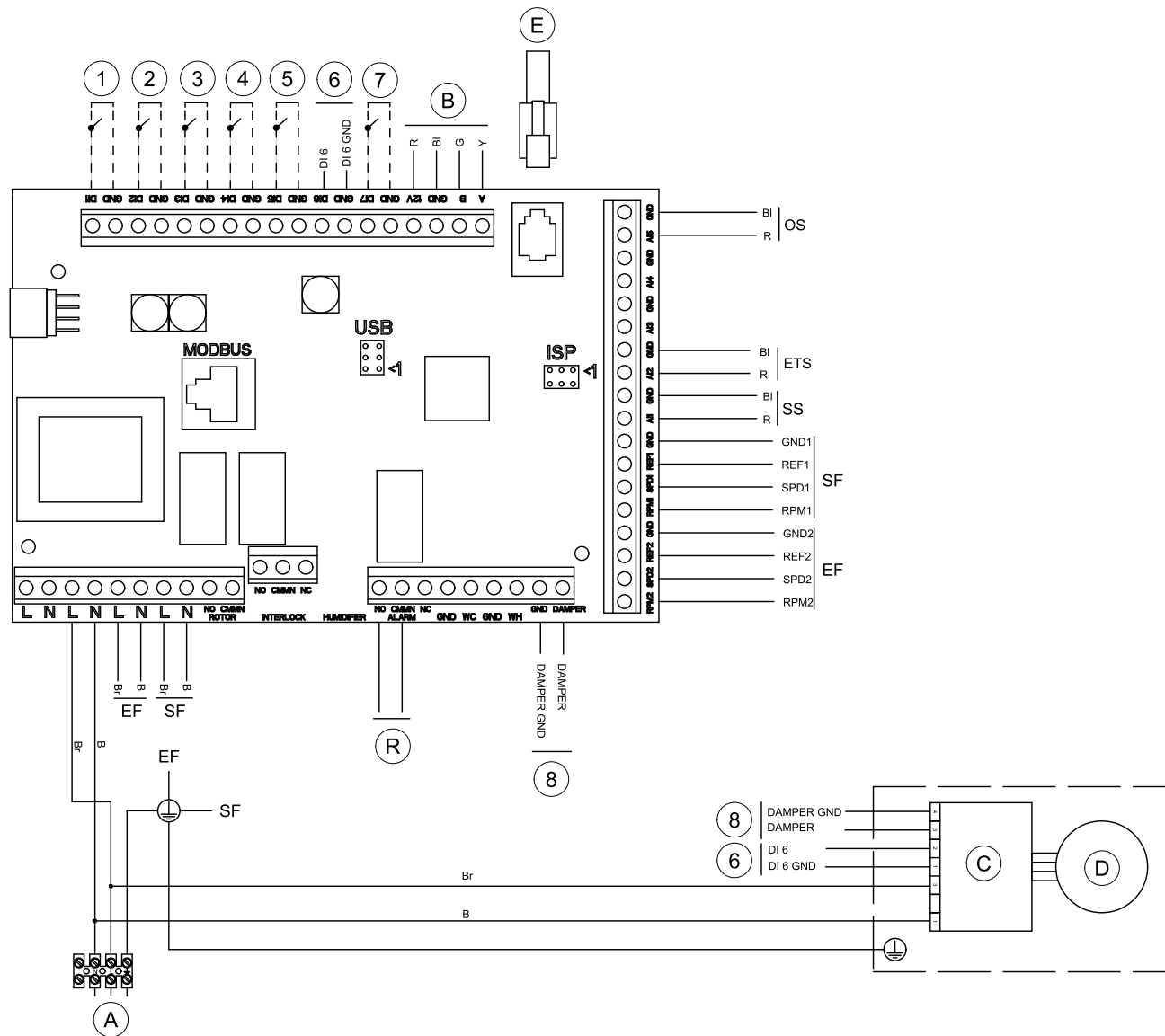
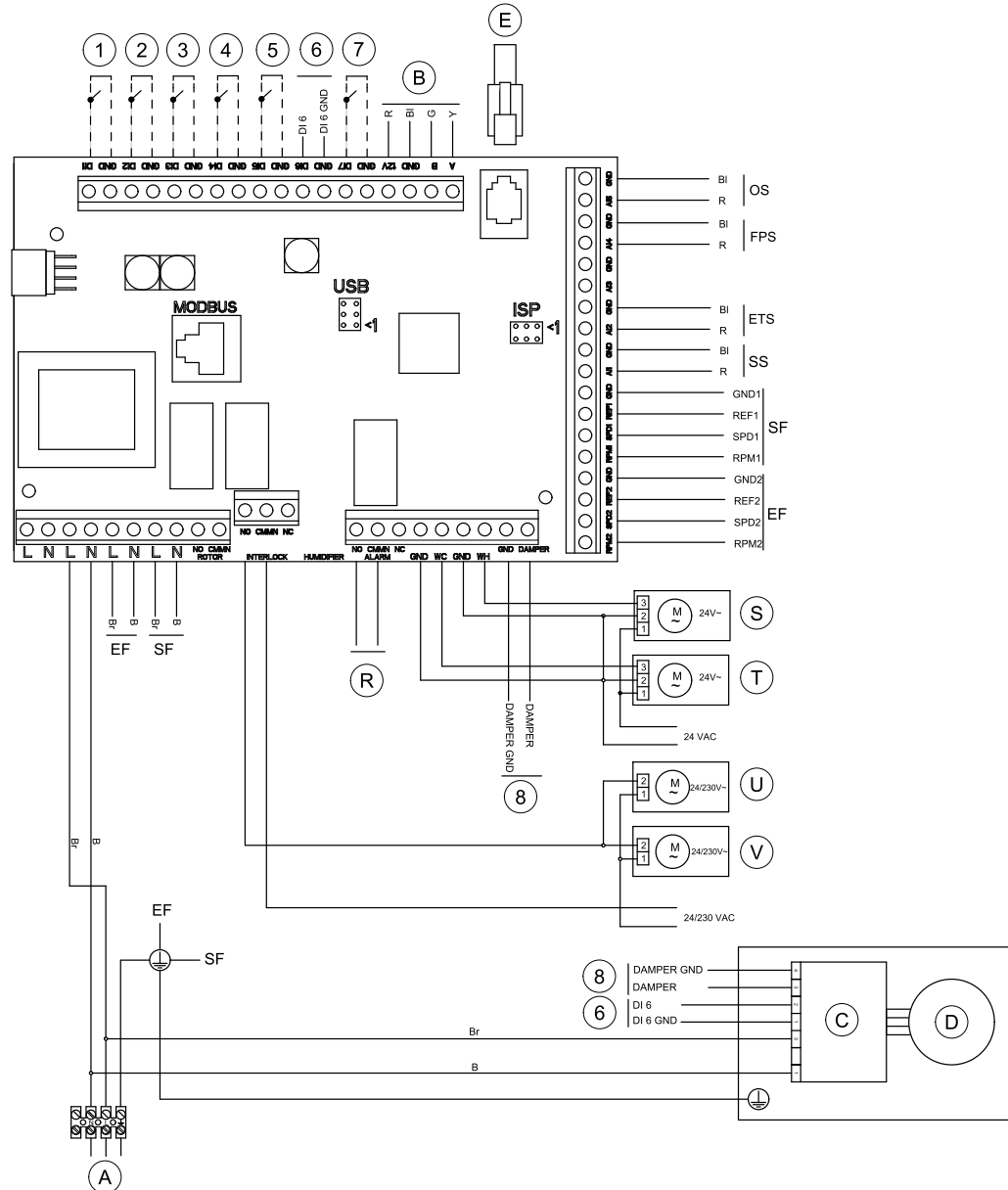


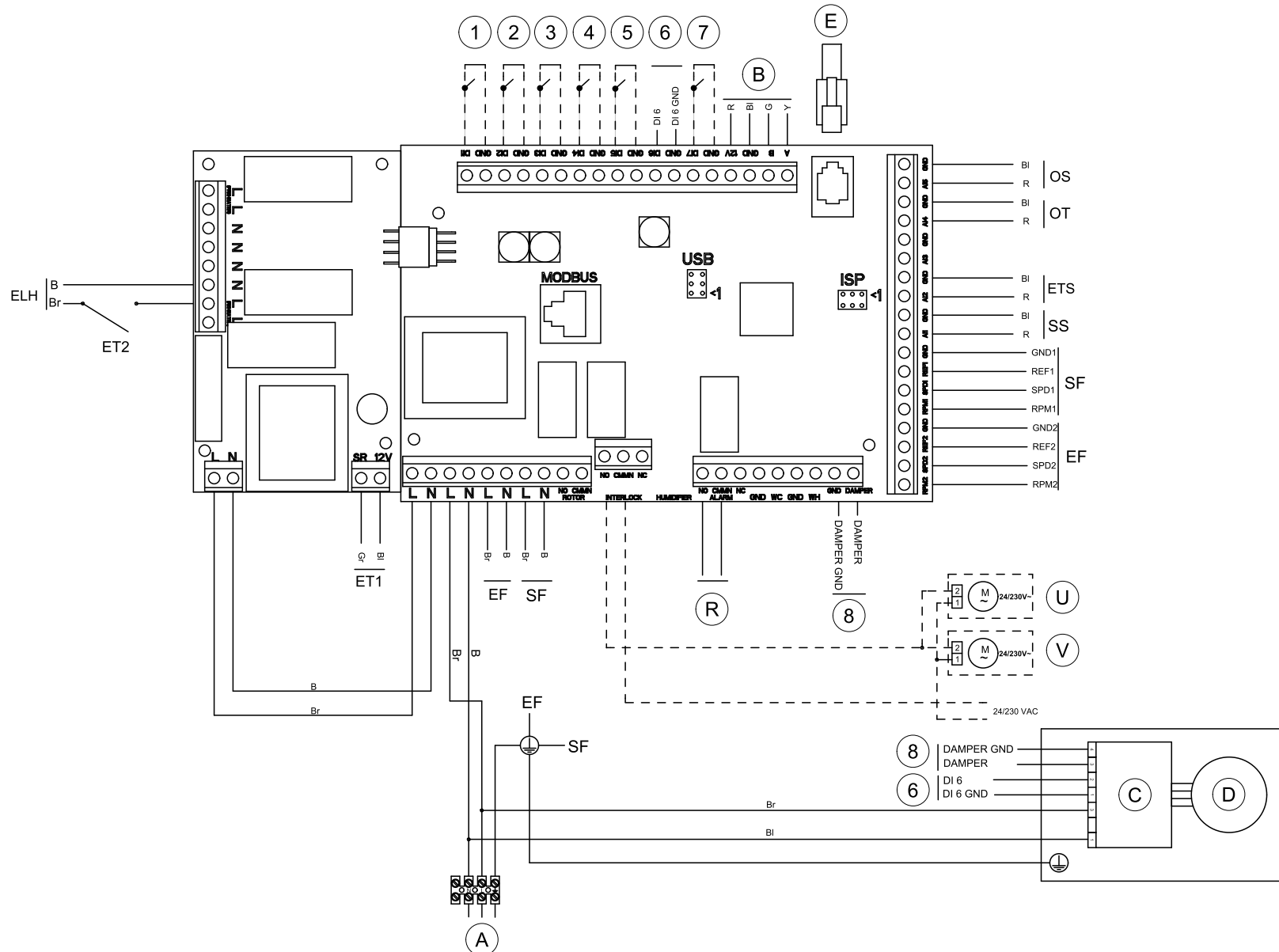
Standart configuration



Units with HW re-heater + WC



## Units with EL re-heater



## Symbol descriptions

Symbol	Description
SF	Supply air fan.
EF	Extract air fan.
SS	Supply air temperature sensor. <sup>1</sup>
ETS	Extract air temperature sensor.
ELH	Electrical re-heater battery.
OT	Overheat protection sensor. <sup>2</sup>
OS	Outdoor air sensor.
FPS	Frost protection sensor, type TG-A130 <sup>3</sup>
ET1	Emergency thermostat, manual reset 120° C (normally closed contact).
ET2	Emergency thermostat, automatic reset 60° C (normally closed contact).
Ⓐ	Mains supply 230 V~ .
Ⓑ	Internal control panel.
Ⓒ	Motor control (bypass damper).
Ⓓ	Damper motor 230V~ (bypass damper).
Ⓔ	External control panel.
Ⓕ	Circuit board, PCU – PB. <sup>2</sup>
Ⓖ	Sum alarm, Max 24V, 1A.
Ⓢ	Water valve actuator, heating.

Symbol	Description
Ⓣ	Water valve actuator, cooling.
Ⓤ	Damper motor Outside air.
Ⓥ	Damper motor Exhaust air.
①	Fan configuration: (std.: EF = High, SF = High).
②	Fan configuration: (std.: EF = Low, SF = Low).
③	Fan configuration: (std.: EF = Low, SF = High).
④	Disconnected re-heater battery.
⑤	Extended running.
⑥	Damper guard (Bypass damper).
⑦	Home/leave.
⑧	Damper control (Bypass damper).
B	Blue.
Br	Brown.
Bl	Black.
R	Red.
Y	Yellow.
G	Green.
Gr	Grey.

1. For water heating/cooling battery, type TG-K360.
2. Units with electrical re-heater battery.
3. Water heating battery.