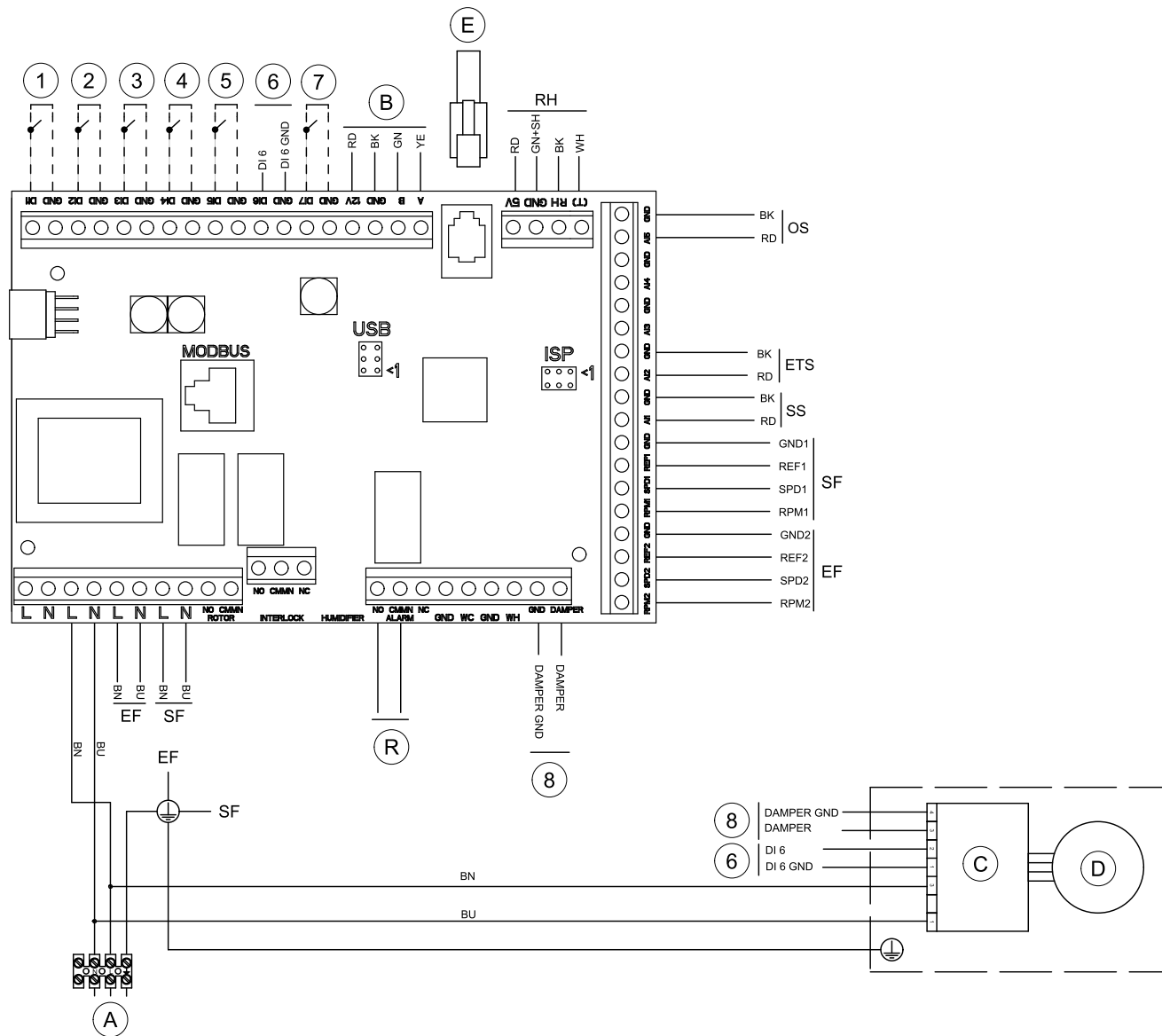
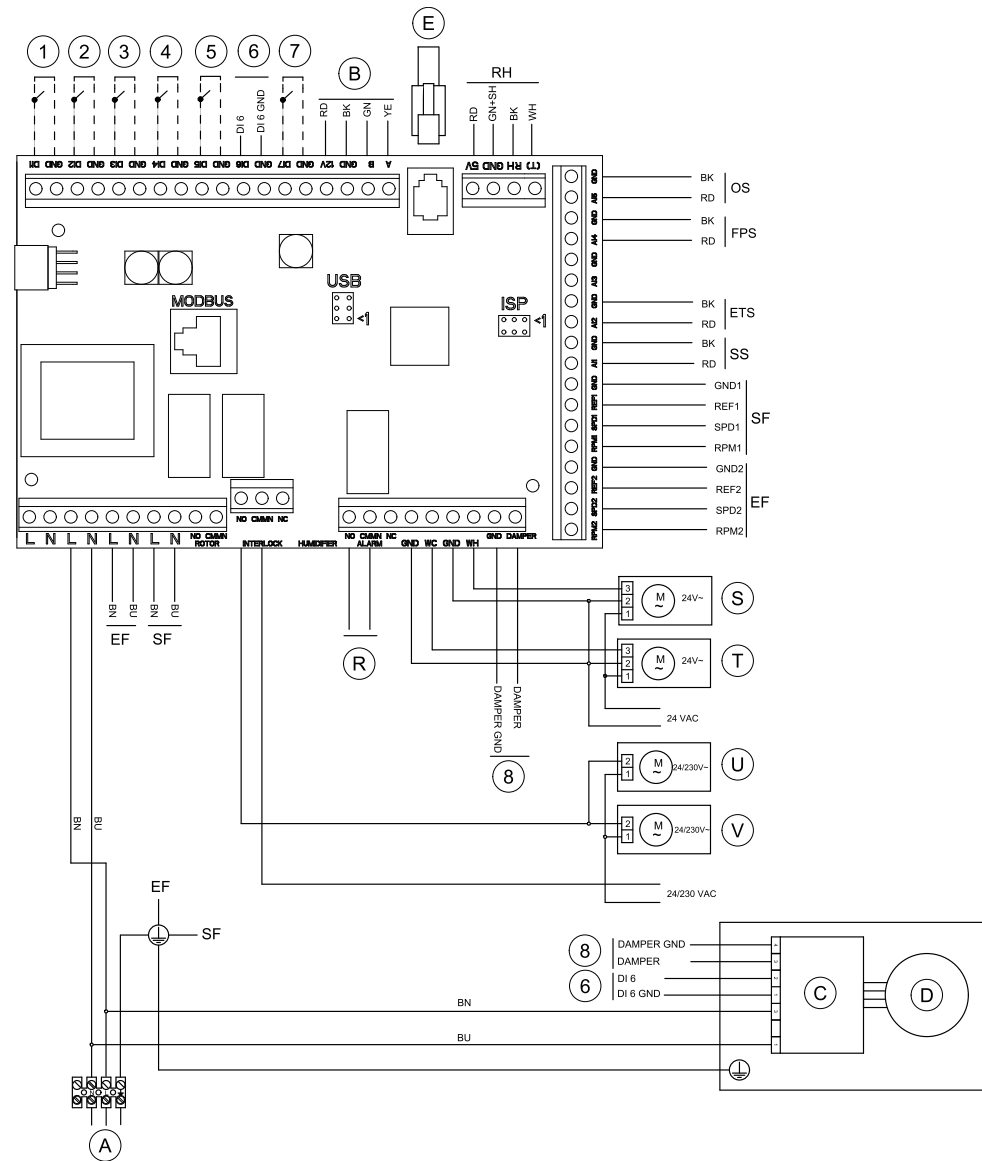


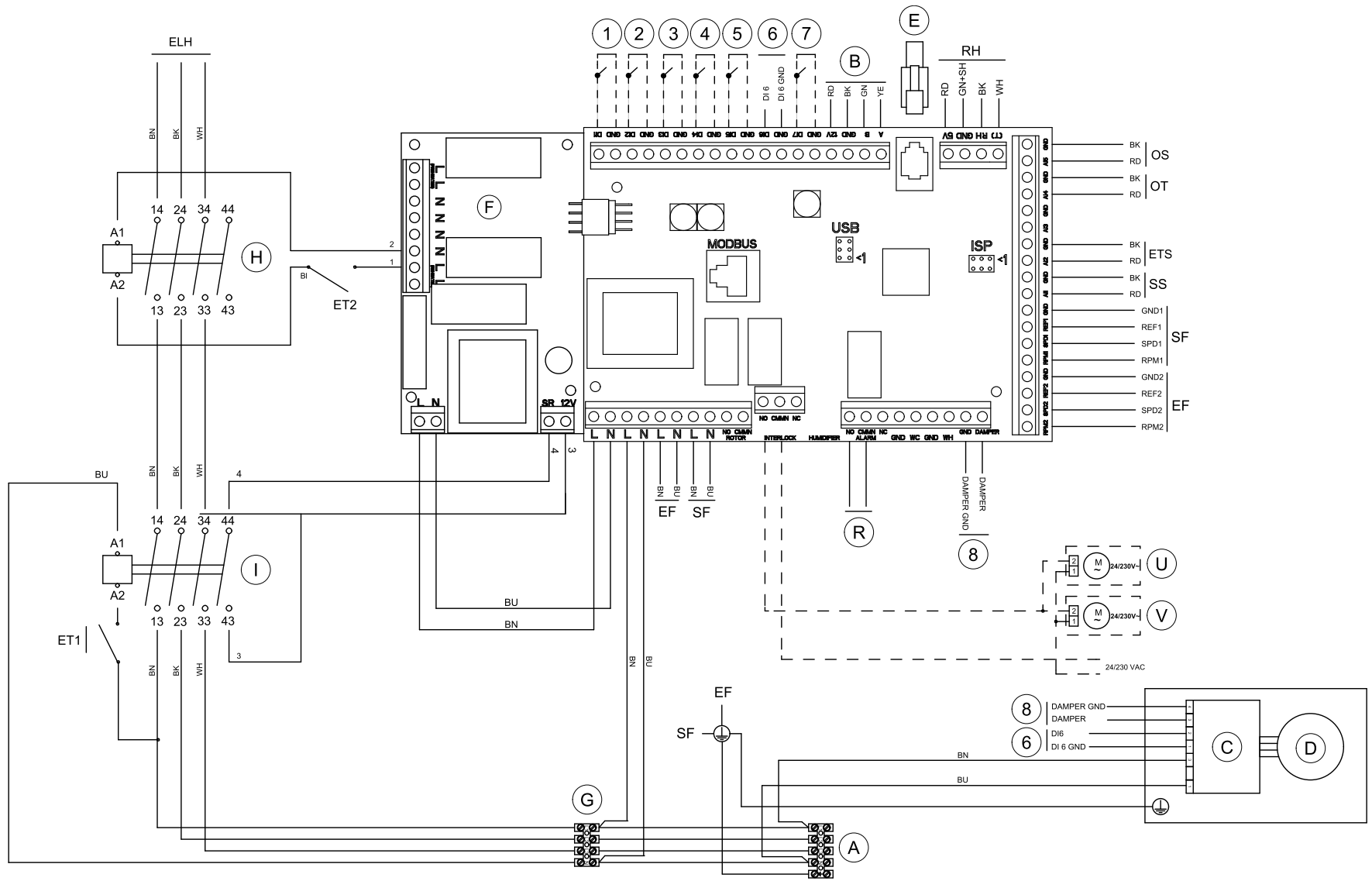
Standard configuration



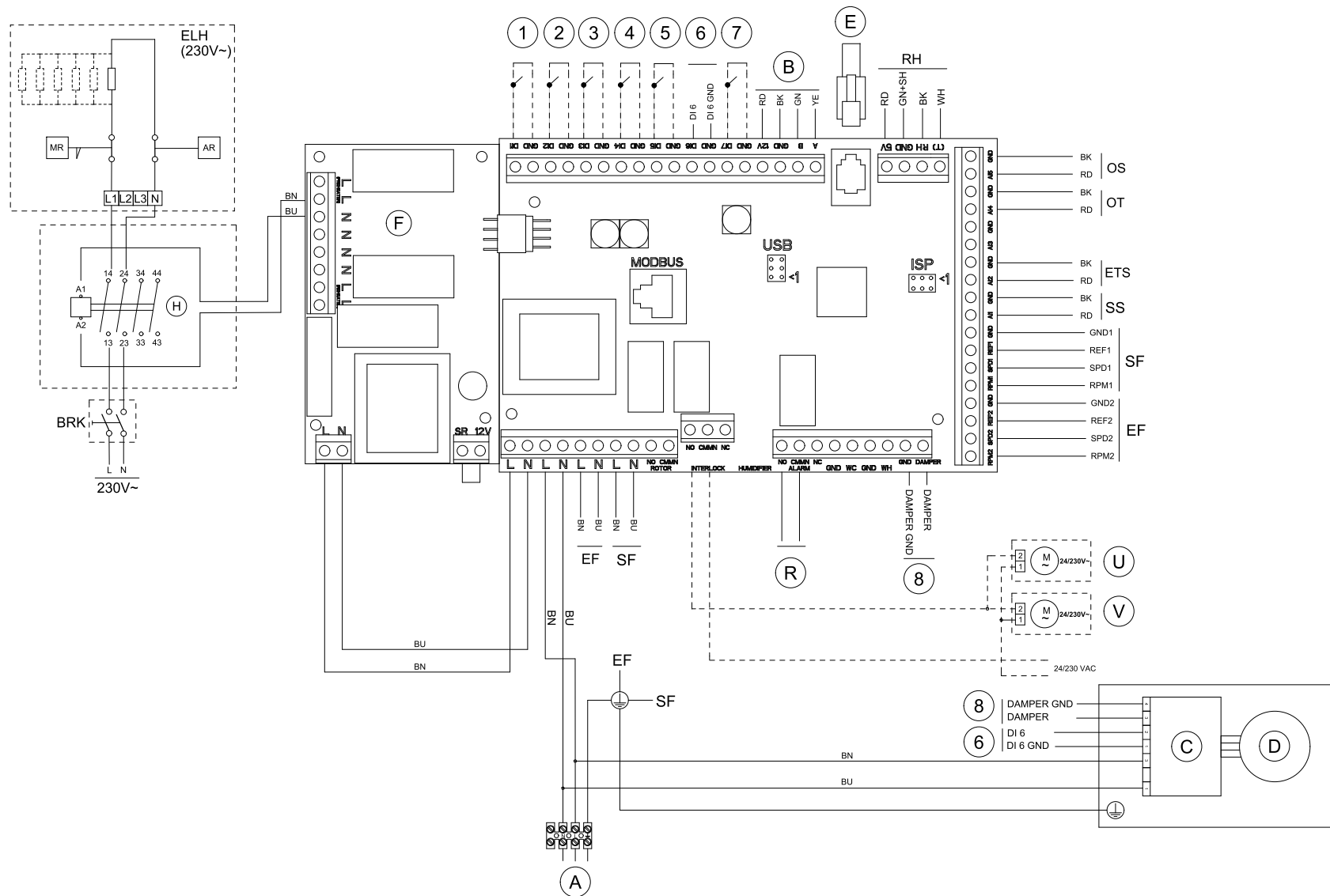
Units with HW re-heater + WC



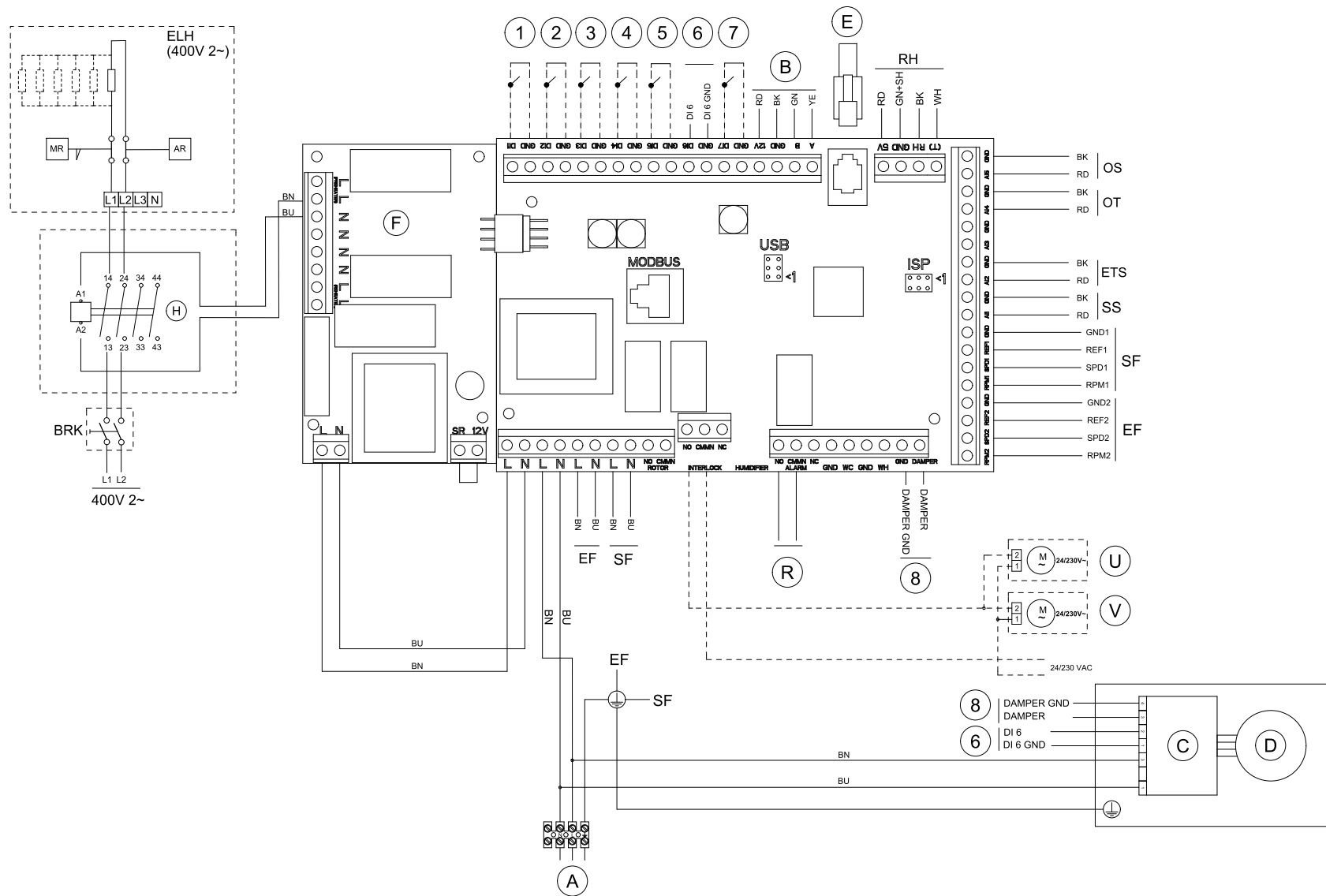
Units with EL re-heater



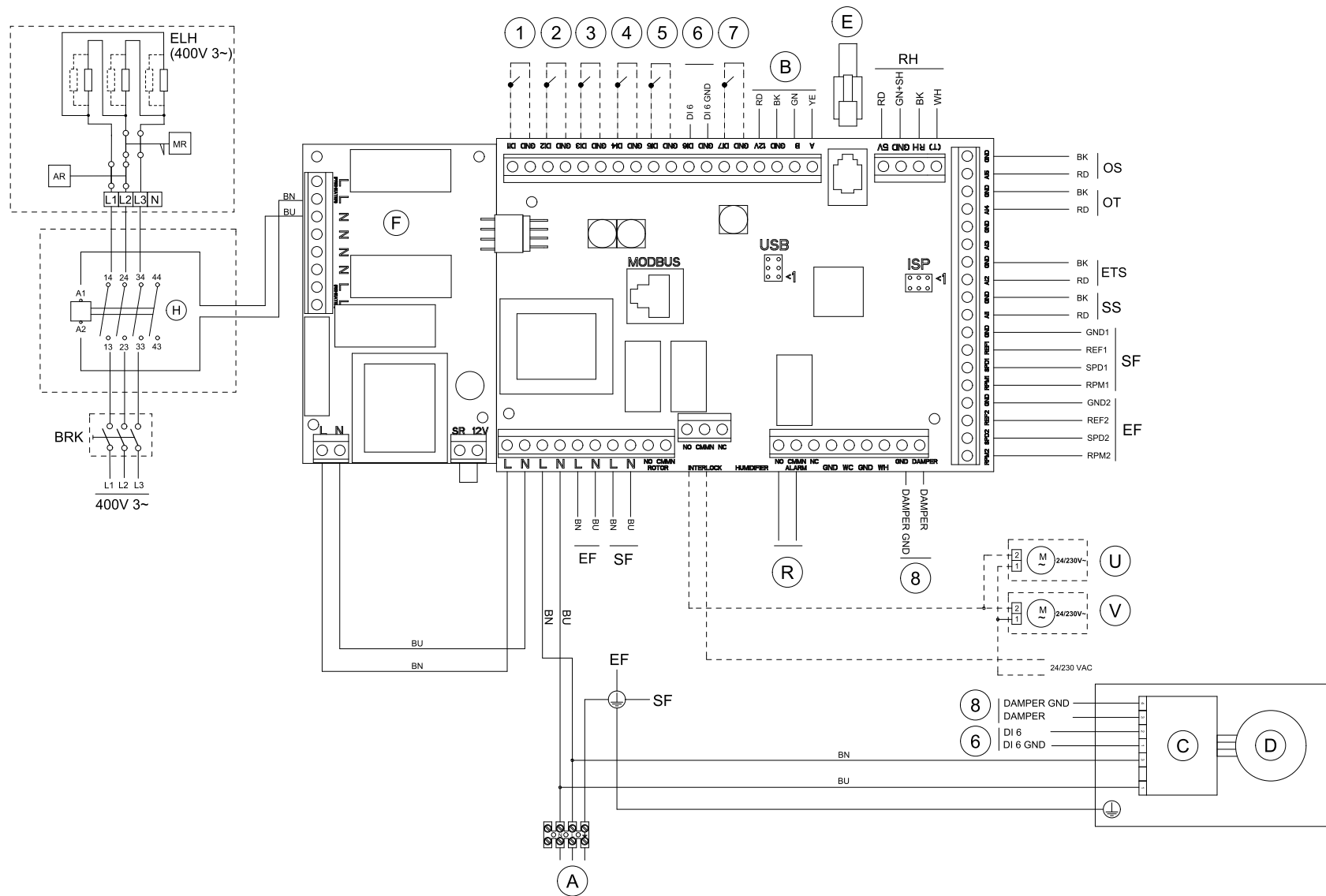
Units with EL pre-heater (230V~) above 1800 W



Units with EL pre-heater (400V 2~)



Units with EL pre-heater (400V 3~)



Symbol	Description
SF	Supply air fan.
EF	Extract air fan.
SS	Supply air temperature sensor. ¹
ETS	Extract air temperature sensor.
ELH	Electrical re-heater battery.
BRK	All phase breaker.
MR	Overheat protection with manual reset.
AR	Overheat protection with automatic reset.
OT	Overheat protection sensor. ²
OS	Outdoor air sensor.
FPS	Frost protection sensor, type TG-A130. ³
ET1	Emergency thermostat, manual reset 120°C (normally closed contact)
ET2	Emergency thermostat, automatic reset 60°C (normally closed contact)
RH	Humidity sensor.
A	Mains supply 230 V~. ⁴
B	Possible connection to control panel. ⁵
C	Motor control (bypass damper).
D	Damper motor 230V~ (bypass damper).
E	External control panel.
F	Circuit board, PCU – PB. ²
R	Sum alarm, Max 24V, 1A.
S	Water valve actuator, heating.
T	Water valve actuator, cooling.
U	Damper motor Outside air.
V	Damper motor Exhaust air.
G	Mains supply for electrical re-heater battery (400 V 3~ N). ²
H	Contactors for electrical re-heater battery on/off switch. ²
I	Contactors for emergency thermostat cut out (ET1). ²

1	Fan configuration: (std.: EF = High, SF = High).
2	Fan configuration: (std.: EF = Low, SF = Low).
3	Fan configuration: (std.: EF = Low, SF = High).
4	Disconnected re-heater battery.
5	Extended running.
6	Damper signal.
7	Home/leave.
8	Damper control (Bypass damper).
BU	Blue.
BN	Brown.
BK	Black.
RD	Red.
YE	Yellow.
GY	Gray.
WH	White.
GN	Green.

1. For water heating/cooling battery, type TG-K360.
2. Units with electrical re-heater battery.
3. Water heating battery.
4. For units with installed electrical re-heater battery mains supply 400 V 3~ is connected.
5. In case the modular contact is not used.